

Depoe Bay Fire District CERT

2-WAY RADIO TRAINING

2017-03-13

Kay Wyatt

WELCOME TO YOUR RADIO!



Midland GXT-760



Midland GXT-1000p

REMOVING THE BELT CLIP

MIDLAND GXT760

To remove the belt clip, press the **LOCK TAB** towards the belt clip away from the radio. Then gently push the belt clip up toward the top of the radio.

To replace the belt clip just slide it into the slots till you hear a click.



LOCK TAB

REMOVING THE BATTERY COVER

MIDLAND GXT760

Remove the battery cover by pressing in on the center top of the cover and sliding the belt clip down.

To replace the battery cover, simply follow the procedure in reverse.



REPLACING THE BATTERY

MIDLAND GXT760

Your radio has a NiMH rechargeable battery pack. Be sure to charge the battery for 12 hours before using.



To remove the battery pack, simply lift it out of the radio with the two side tabs.



REPLACING THE BATTERY

MIDLAND GXT760

Your radio can also use standard AA batteries. Notice that it takes FOUR AA batteries. The 4th battery slides up inside the radio.



SAFETY WARNING

DO **NOT** TRY TO CHARGE AA
BATTERIES
WITH THE CHARGING UNIT
SUPPLIED WITH THE RADIO!

BATTERY HINTS

- In cold weather keep the radio warm inside a coat pocket or in your purse, NOT exposed on your belt. Your battery will last longer that way.
- Adapters which enable you to power the radio from your automobile cigarette lighter plug are useful for extended operation.
- Ear pieces are also available

Plug in here



Ear piece



TURNING RADIO ON AND OFF

MIDLAND GXT760

Turn unit on by
rotating knob
clockwise.

Turn off by rotating
counter-clockwise.

This knob also
controls the
volume.



2-WAY RADIO DISPLAY

MIDLAND GXT760

Key Lock Icon

VOX Icon

NOAA Weather

Channel No

Privacy Code



Battery Meter

Vibrate-alert Icon

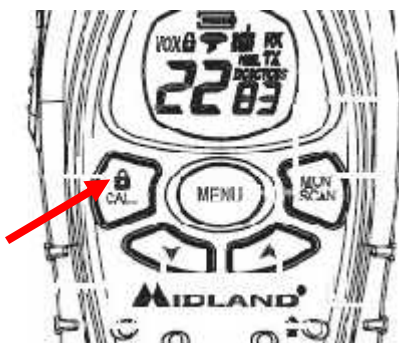
Receive (RX) Icon

Transmit (TX) Icon

Transmit Power

Privacy Code Method

TO LOCK YOUR RADIO



To avoid accidentally changing radio settings, press and hold the CALL/LOCK button for 2 seconds

The key lock icon will appear on the display.

To turn off lock, press and hold the CALL/LOCK button for 2 seconds.

Midland GXT-760 Radio Operation (cont'd)

FUNCTION	Press	OPTION	TO EXIT
Monitor mode	MON/SCAN for one second		MON/SCAN for one second
Scan channels	MON/SCAN briefly		MON/SCAN briefly
Lock Radio	Press CALL/ lock 2 sec		Press CALL/ lock 2 sec
Turn on weather scanning	Press MENU 5 seconds		Press PTT
Set Weather station *	Press MENU briefly	↑↓ to channel 1	Press PTT
Turn on weather alert*	Press MENU two times	↑↓ to on	Press PTT

*Must be in Weather Scanning mode

Two-way Radio Channels

Channels 1- 7 → FRS/GMRS

Channels 8-14 → FRS

Channels 15-22 → GMRS

FRS uses 1/2 watt power

GMRS uses up to 5 watt power

Licensing

No license required for FRS

The FCC requires a license for using the GMRS channels. The fee is \$70 for five years. See the following link for more info:

http://wireless.fcc.gov/services/index.htm?job=licensing&id=general_mobile

MENU OPTIONS

Channel
Privacy Code
Power
VOX
Silent Operation
Roger Beep
Call Tone
Vibrate

SETTING THE CHANNEL



Press the menu button **once**.



Next press the up or down buttons to select the channel.



Press the button to save the setting.



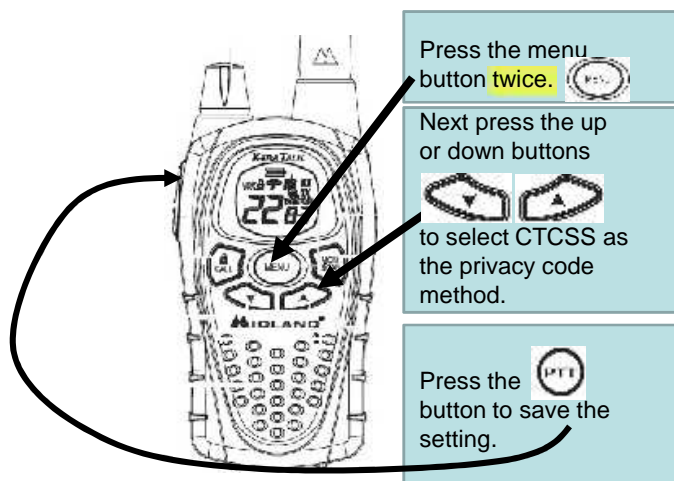
Depoe Bay Fire District CERT: Channel 21, Privacy Code 21
Lincoln County CERT: Channel 12, Privacy Code 12

Midland GXT-760 Radio Operation

FUNCTION	Press	OPTION	TO EXIT
Set channel	Menu 1 time	↑↓ to 21	Press PTT
Set privacy method	Menu 2 times	↑↓ to ct	Press PTT
Set privacy code	Menu 3 times	↑↓ to 21	Press PTT
Set power level	Menu 4 times	↑↓ to H	Press PTT
Turn VOX off	Menu 5 times	↑↓ to oF	Press PTT
Disable silent mode	Menu 6 times	↑↓ to on	Press PTT
Turn on Roger Beeps	Menu 7 times	↑↓ to on	Press PTT
Select call tone	Menu 8 times	↑↓ to desired tone	Press PTT
Disable vibraAlert	Menu 9 times	↑↓ to oF	Press PTT

Depoe Bay Fire District CERT
Channel 21
Privacy Method → CTCSS
Privacy Code → 21

SETTING THE PRIVACY METHOD

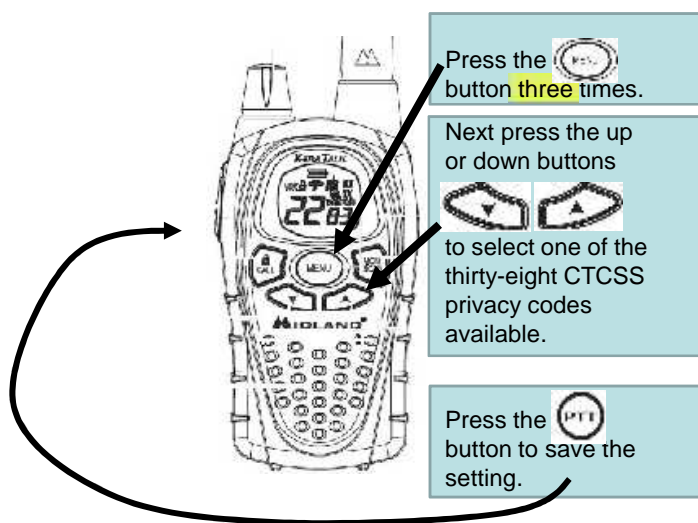


Depoe Bay Fire District CERT: Channel 21, Privacy Code 21
 Lincoln County CERT: Channel 12, Privacy Code 12

Midland GXT-760 Radio Operation

FUNCTION	Press	OPTION	TO EXIT
Set channel	Menu 1 time	↑↓ to 21	Press PTT
Set privacy method	Menu 2 times	↑↓ to ct	Press PTT
Set privacy code	Menu 3 times	↑↓ to 21	Press PTT
Set power level	Menu 4 times	↑↓ to H	Press PTT
Turn VOX off	Menu 5 times	↑↓ to oF	Press PTT
Disable silent mode	Menu 6 times	↑↓ to on	Press PTT
Turn on Roger Beeps	Menu 7 times	↑↓ to on	Press PTT
Select call tone	Menu 8 times	↑↓ to desired tone	Press PTT
Disable vibraAlert	Menu 9 times	↑↓ to oF	Press PTT

SETTING THE PRIVACY CODE

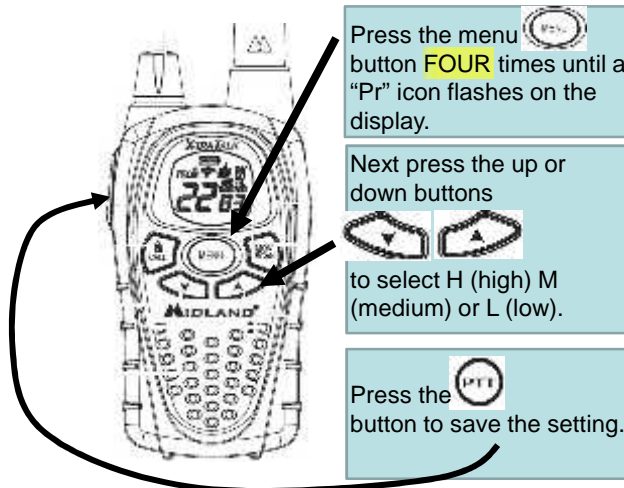


Depoe Bay Fire District CERT: Channel 21, Privacy Code 21
 Lincoln County CERT: Channel 12, Privacy Code 12

Midland GXT-760 Radio Operation

FUNCTION	Press	OPTION	TO EXIT
Set channel	Menu 1 time	↑↓ to 21	Press PTT
Set privacy method	Menu 2 times	↑↓ to ct	Press PTT
Set privacy code	Menu 3 times	↑↓ to 21	Press PTT
Set power level	Menu 4 times	↑↓ to H	Press PTT
Turn VOX off	Menu 5 times	↑↓ to oF	Press PTT
Disable silent mode	Menu 6 times	↑↓ to on	Press PTT
Turn on Roger Beeps	Menu 7 times	↑↓ to on	Press PTT
Select call tone	Menu 8 times	↑↓ to desired tone	Press PTT
Disable vibraAlert	Menu 9 times	↑↓ to oF	Press PTT

SETTING THE POWER LEVEL



Low = ½ Watt
 Med = 2 Watts
 High = 5 Watts

The power defaults to LOW for Channels 8-14

Depoe Bay Fire District CERT: Channel 21, Privacy Code 21
Lincoln County CERT: Channel 12, Privacy Code 12

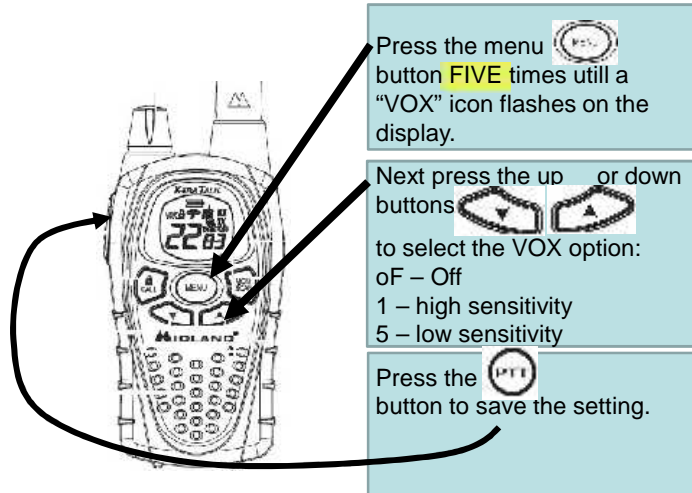
Midland GXT-760 Radio Operation

FUNCTION	Press	OPTION	TO EXIT
Set channel	Menu 1 time	↑↓ to 21	Press PTT
Set privacy method	Menu 2 times	↑↓ to ct	Press PTT
Set privacy code	Menu 3 times	↑↓ to 21	Press PTT
Set power level	Menu 4 times	↑↓ to H	Press PTT
Turn VOX off	Menu 5 times	↑↓ to <u>oF</u>	Press PTT
Disable silent mode	Menu 6 times	↑↓ to on	Press PTT
Turn on Roger Beeps	Menu 7 times	↑↓ to on	Press PTT
Select call tone	Menu 8 times	↑↓ to desired tone	Press PTT
Disable vibraAlert	Menu 9 times	↑↓ to <u>oF</u>	Press PTT

**USE THE LOWEST POWER
SETTING YOU CAN IN
ORDER TO MAKE YOURSELF
HEARD**

THIS CONSERVES YOUR BATTERY

USING THE HANDS FREE/VOX OPTION



It can be very annoying to your listeners, so **use this sparingly**. For example, you might use this option when you are receiving instruction while you are setting a broken arm.

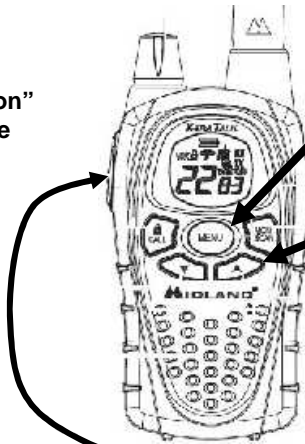
Depoe Bay Fire District CERT: Channel 21, Privacy Code 21
 Lincoln County CERT: Channel 12, Privacy Code 12

Midland GXT-760 Radio Operation

FUNCTION	Press	OPTION	TO EXIT
Set channel	Menu 1 time	↑↓ to 21	Press PTT
Set privacy method	Menu 2 times	↑↓ to ct	Press PTT
Set privacy code	Menu 3 times	↑↓ to 21	Press PTT
Set power level	Menu 4 times	↑↓ to H	Press PTT
Turn VOX off	Menu 5 times	↑↓ to oF	Press PTT
Disable silent mode	Menu 6 times	↑↓ to on	Press PTT
Turn on Roger Beeps	Menu 7 times	↑↓ to on	Press PTT
Select call tone	Menu 8 times	↑↓ to desired tone	Press PTT
Disable vibraAlert	Menu 9 times	↑↓ to oF	Press PTT

SETTING THE "SILENT OPERATION"

NOTE:
When "silent operation"
is on, all "beeps" are
disabled



Press the menu button **SIX** times until a "bP" icon flashes on the display.

Next press the up or down buttons to turn on or off.

Press the button to save the setting.

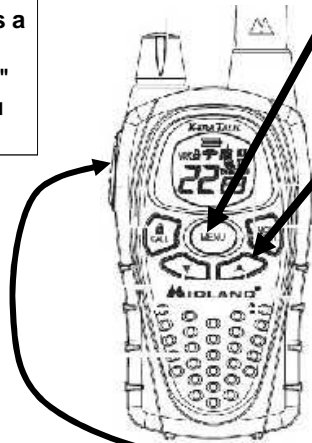
Depoe Bay Fire District CERT: Channel 21, Privacy Code 21
Lincoln County CERT: Channel 12, Privacy Code 12

Midland GXT-760 Radio Operation

FUNCTION	Press	OPTION	TO EXIT
Set channel	Menu 1 time	↑↓ to 21	Press PTT
Set privacy method	Menu 2 times	↑↓ to ct	Press PTT
Set privacy code	Menu 3 times	↑↓ to 21	Press PTT
Set power level	Menu 4 times	↑↓ to H	Press PTT
Turn VOX off	Menu 5 times	↑↓ to oF	Press PTT
Disable silent mode	Menu 6 times	↑↓ to on	Press PTT
Turn on Roger Beeps	Menu 7 times	↑↓ to on	Press PTT
Select call tone	Menu 8 times	↑↓ to desired tone	Press PTT
Disable vibraAlert	Menu 9 times	↑↓ to oF	Press PTT

ROGER BEEPS (Talk Confirmation Tone)

If this feature is turned on, when you release the PTT button the radio transmits a unique tone. It is like saying "Roger" or "over" and let others know you have finished talking.



Press the menu button **SEVEN** times until a "rb" icon flashes on the display.

Next press the up or down buttons to turn on or off.

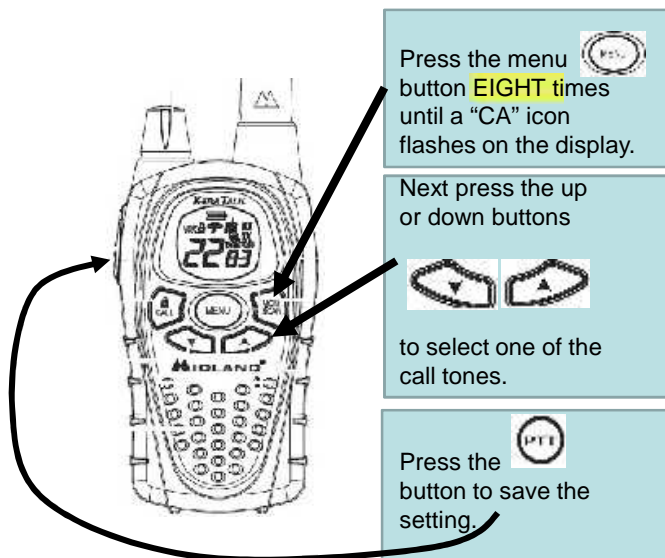
Press the PTT button to save the setting.

Depoe Bay Fire District CERT: Channel 21, Privacy Code 21
Lincoln County CERT: Channel 12, Privacy Code 12

Midland GXT-760 Radio Operation

FUNCTION	Press	OPTION	TO EXIT
Set channel	Menu 1 time	↑↓ to 21	Press PTT
Set privacy method	Menu 2 times	↑↓ to ct	Press PTT
Set privacy code	Menu 3 times	↑↓ to 21	Press PTT
Set power level	Menu 4 times	↑↓ to H	Press PTT
Turn VOX off	Menu 5 times	↑↓ to oF	Press PTT
Disable silent mode	Menu 6 times	↑↓ to on	Press PTT
Turn on Roger Beeps	Menu 7 times	↑↓ to on	Press PTT
Select call tone	Menu 8 times	↑↓ to desired tone	Press PTT
Disable vibraAlert	Menu 9 times	↑↓ to oF	Press PTT

SETTING THE CALL TONE

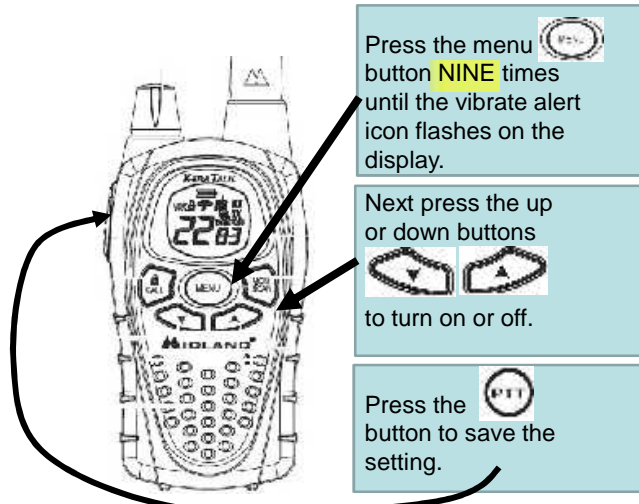


Depoe Bay Fire District CERT: Channel 21, Privacy Code 21
Lincoln County CERT: Channel 12, Privacy Code 12

Midland GXT-760 Radio Operation

FUNCTION	Press	OPTION	TO EXIT
Set channel	Menu 1 time	↑↓ to 21	Press PTT
Set privacy method	Menu 2 times	↑↓ to ct	Press PTT
Set privacy code	Menu 3 times	↑↓ to 21	Press PTT
Set power level	Menu 4 times	↑↓ to H	Press PTT
Turn VOX off	Menu 5 times	↑↓ to oF	Press PTT
Disable silent mode	Menu 6 times	↑↓ to on	Press PTT
Turn on Roger Beeps	Menu 7 times	↑↓ to on	Press PTT
Select call tone	Menu 8 times	↑↓ to desired tone	Press PTT
Disable vibraAlert	Menu 9 times	↑↓ to oF	Press PTT

SETTING THE VIBRACALL ALERT



When activated, the radio vibrates to notify you that your radio is receiving a message. Useful in noisy environments when you cannot easily hear the radio.

Depoe Bay Fire District CERT: Channel 21, Privacy Code 21
Lincoln County CERT: Channel 12, Privacy Code 12

Midland GXT-760 Radio Operation

FUNCTION	Press	OPTION	TO EXIT
Set channel	Menu 1 time	↑↓ to 21	Press PTT
Set privacy method	Menu 2 times	↑↓ to ct	Press PTT
Set privacy code	Menu 3 times	↑↓ to 21	Press PTT
Set power level	Menu 4 times	↑↓ to H	Press PTT
Turn VOX off	Menu 5 times	↑↓ to oF	Press PTT
Disable silent mode	Menu 6 times	↑↓ to on	Press PTT
Turn on Roger Beeps	Menu 7 times	↑↓ to on	Press PTT
Select call tone	Menu 8 times	↑↓ to desired tone	Press PTT
Disable vibraAlert	Menu 9 times	↑↓ to oF	Press PTT

NWR

NOAA Weather Radio

NOAA Weather Radio All Hazards (NWR) is a nationwide network of radio stations broadcasting continuous weather & hazard information directly from the nearest National Weather Service office

Be Informed

Lincoln County NOAA Radio Tower



YOUR 2-WAY RADIO CAN TUNE INTO THE NOAA RADIO STATIONS

TURN THE NOAA RADIO ON

Let's you listen to the NOAA radio continuously.
You cannot use the 2-way radio in this mode.

SET THE NOAA RADIO STATION

TURN ON THE NOAA ALERT

You can go on to use the 2-way radio function.
If a NOAA alert occurs, the NOAA alert broadcast will automatically come on.

TURNING ON THE NOAA RADIO



To turn the **NOAA WEATHER SCAN** on, press and hold the **MENU** button for 5 seconds

To return to normal 2-way radio mode, press the PTT button.

Midland GXT-760 Radio Operation (cont'd)

FUNCTION	Press	OPTION	TO EXIT
Monitor mode	MON/SCAN for one second		MON/SCAN for one second
Scan channels	MON/SCAN briefly		MON/SCAN briefly
Lock Radio	Press CALL/ lock 2 sec		Press CALL/ lock 2 sec
Turn on Weather scanning	Press MENU 5 seconds		Press PTT
Set weather station *	Press MENU briefly	↑↓ to channel 1	Press PTT
Turn on weather alert*	Press MENU two times	↑↓ to on	Press PTT

*Must be in Weather Scanning mode

SETTING THE NOAA STATION



While listening to the NOAA radio...

Press the menu button once.



Press the UP/DOWN buttons to select the channel of your choice (Lincoln County uses Channel #1).



Save this setting by pressing the PTT button.



Midland GXT-760 Radio Operation (cont'd)

FUNCTION	Press	OPTION	TO EXIT
Monitor mode	MON/SCAN for one second		MON/SCAN for one second
Scan channels	MON/SCAN briefly		MON/SCAN briefly
Lock Radio	Press CALL/ lock 2 sec		Press CALL/ lock 2 sec
Turn on Weather scanning	Press MENU 5 seconds		Press PTT
Set Weather station *	Press MENU briefly	↑↓ to channel 1	Press PTT
Turn on weather alert*	Press MENU two times	↑↓ to on	Press PTT

*Must be in Weather Scanning mode

TURNING ON THE NOAA ALERT FEATURE



While listening to the NOAA radio...

Press the menu button twice.

Press the UP/DOWN buttons to turn the alert on or off

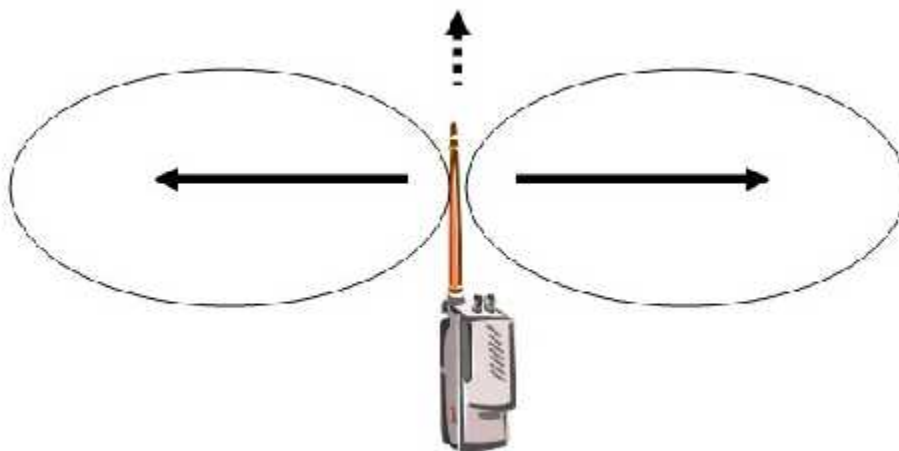
Save this setting pressing the PTT button.

Midland GXT-760 Radio Operation (cont'd)

FUNCTION	Press	OPTION	TO EXIT
Monitor mode	MON/SCAN for one second		MON/SCAN for one second
Scan channels	MON/SCAN briefly		MON/SCAN briefly
Lock Radio	Press CALL/ lock 2 sec		Press CALL/ lock 2 sec
Turn on Weather scanning	Press MENU 5 seconds		Press PTT
Set Weather station *	Press MENU briefly	↑↓ to channel 1	Press PTT
Turn on weather alert*	Press MENU two times	↑↓ to on	Press PTT

*Must be in Weather Scanning mode

HOLD YOUR RADIO
VERTICALLY WHEN YOU TALK!



WHEN MAKING A CALL

- Pick up your radio and listen to see if anyone is talking. Wait a few seconds as it may be in a pause in the conversation. If no one is talking, proceed.
- Hold the radio VERTICALLY
- Press push-to-talk (PTT) button firmly, hold, pause for a second then begin speaking into the microphone. Otherwise some of your message may not get through.

WHEN MAKING A CALL

- Press the PTT only when you are speaking. Do not continue to press the PTT button while you are thinking about what to say.
- Always release the push-to-talk (PTT) button whenever you stop talking.
- Identify the station you are calling and then state your station. For example: "Incident Command, this is Logistics Team 2. Over."
- End each transmission with "Over".
When done, end last transmission with "Clear"

WHEN RECEIVING A CALL

- Leave a second or two before replying to give others a chance to break in, in case of emergency.
- When you answer a call, state the station that is calling you followed by your station.
- For example, say "Search & Rescue One, this is Incident Command. Go ahead, over"

EXAMPLE CALL

You are calling CERT Command because you need stretchers during your search and Rescue

CERT Command, this is Search & Rescue One, over

Search & Rescue One, this is CERT Command. Go ahead, over

CERT Command, Search & Rescue. Send 2 stretchers to the corner of 12th Street and Main street, over

Search & Rescue One, CERT Command. Confirm, we will send 2 stretchers to the corner of 12th Street and Main street, over

CERT Command, Search & Rescue One . Affirmative and clear.

Cert Command clear.

RADIO PHRASE:	MEANING
AFFIRMATIVE	Yes
NEGATIVE	No
CHECK/COPY	Understood
WILCO	Message understood, WILL Comply
CONFIRM	My version is ... Is that correct?
DO YOU READ/COPY	Called you once or more, please acknowledge
EN ROUTE	Resources heading to the incident
GO AHEAD	Listening, proceed with message
SAY AGAIN	Repeat last message
STAND BY	Busy, please pause for a moment
VERIFY	Confirm information with the source
ALL CLEAR	Situation is under control
OVER	Message completed, reply expected
CLEAR	Conversation completed, no reply expected

CONVERSATION TIPS

- Messages should always be kept short and to the point.
- Pronounce your words clearly and slowly
- Speak in a normal tone of voice

CONVERSATION TIPS (cont'd)

- Keep your mouth within 2 to 3 inches from the microphone and speak ACOSS the mic.
- Be brief and to the point. Keep the channel open for others to use. Limit communication to essential radio calls only. Only speak when absolutely necessary. Safety information must take priority.

CONVERSATION TIPS (cont'd)

- Long conversations are typically not appropriate for a 2-way radio. Use a cell phone instead if possible. Remember, others are listening and waiting for their chance to call someone!
- Always confirm the information you are given. Repeating your instructions is a good idea.

CONVERSATION TIPS (cont'd)

- Keep a calm voice even if you do not feel calm. Sometimes people shout into the microphone when they are panicky. This can overdrive the microphone making it very difficult to be heard.
- Use the word “over” at the end of each comment or question.
- Use the word “clear” at the end of the conversation.

SPEAKING IN A NOISY ENVIRONMENT

- It doesn't help to talk louder on the radio in a noisy environment, even though it may seem natural to speak louder when it is noisy around you.
- When you yell, the radio clips your voice, distorting voice audio so that it is less understandable.
- Speak ACROSS the microphone rather than into it because breath sounds also reduce intelligibility.

SPEAKING IN A NOISY ENVIRONMENT, cont'd

- The only way to overcome loud ambient noise is to shield the microphone from the wind, point it away from the source of noise or wait until the noise passes.
- Do not use your radio next to another radio as it will cause screeching feedback. If the person next to you starts using their radio, turn your radio down or move away.

PRIVACY ISSUES

- Remember, anyone can hear your conversation over a 2-way radio.
- Avoid discussing sensitive issues on open channels.
- For example, do not say “John Doe is on vacation and won’t be back for two weeks”, or “Sally Sue is at the hospital getting a colonoscopy”.

**SIX QUICK STEPS FOR GOOD 2-WAY RADIO
COMMUNICATION:**

1. Engage Brain
2. Form a Concise (brief and compact) thought.
3. Hold the radio vertically
4. Press and hold the PTT switch
5. Pause briefly (as other radios receive your carrier and open their speakers).
6. Articulate your message Quickly and Clearly.

RADIO STRATEGY BEFORE DISASTER

- Keep your NOAA Alert feature on at all times
- A radio is of no value if the battery is dead. You never know when an emergency will occur!
- Keep extra AA batteries in your pack!
- Participate in the DBFD CERT practice drills so you know how to use your radio and you know who is available to relay messages

RADIO STRATEGY BEFORE DISASTERS

- ***Every 30 days:***
- Charge your radio for 8 hours
- Switch to your ***spare battery*** and charge again for 8 hours
- Remove radio from charger

CHARGER FOR GXT-760



CHARGER FOR GXT-1000P



RADIO STRATEGY DURING DISASTERS

- During a disaster, you may wish to preserve your radio batteries by checking in at prescheduled times. This doesn't mean that you can't talk at other times. But during an extended emergency you may want to limit your talk time to preserve your batteries
- Turn on your radio at the top of the hour and listen. It uses much less power to listen than to talk.
- It is especially important to be available at **10am** and **4pm** because that will be prime time to talk among the neighborhoods (such as Sea Crest, Sea Grove, Coronado Shores, Little Whale Cove, Salishan, etc)

RADIO STRATEGY DURING DISASTERS

- Our GMRS radios have a limited range so we will likely have to **relay** information from one CERT to another
- If possible walk to the highest location in your neighborhood. Remember to hold your radio antenna **vertically** to increase your transmission strength
- Prioritize your messages
 - **Life safety** first (injuries, survivor statistics, medication/supplies requests, etc)
 - **Health and welfare** messages 2nd (example: “Tell Aunt Sally that I am ok”)

RADIO STRATEGY DURING DISASTERS

- GMRS messages are to be routed to local HAM operators who can transmit important information to the County Emergency Operation Center (EOC).
- Depoe Bay also has a communication trailer that can receive GMRS messages from local CERTs and relay messages to the County EOC

SUGGESTIONS FOR POWERING YOUR RADIO DURING DISASTERS

- Connect your charger to your car cigarette lighter using the adapter provided by DBFD CERT
- Because of road damage/failure there will be many cars unable to travel. Ask your neighbors if you may charge your radio from their car battery.
- Consider purchasing a solar charging system. There are several options available. Check the “resources” page on www.DepoeBayCERT.org next week.

RECOMMENDATIONS

- Find other CERT members in your neighborhood
- Set up a regular time for a radio roll call. For example, every Sunday at 7pm
- Perform impromptu radio checks
- Practice, Practice, Practice!

**YOU may be the only way
your neighborhood can
communicate with the
outside world after a
catastrophic disaster!**